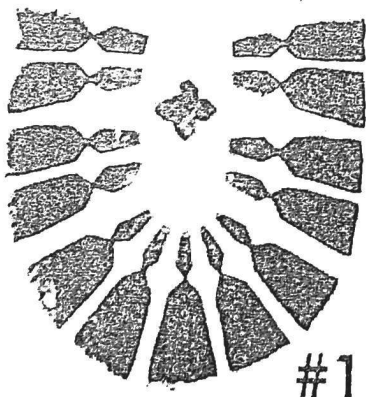
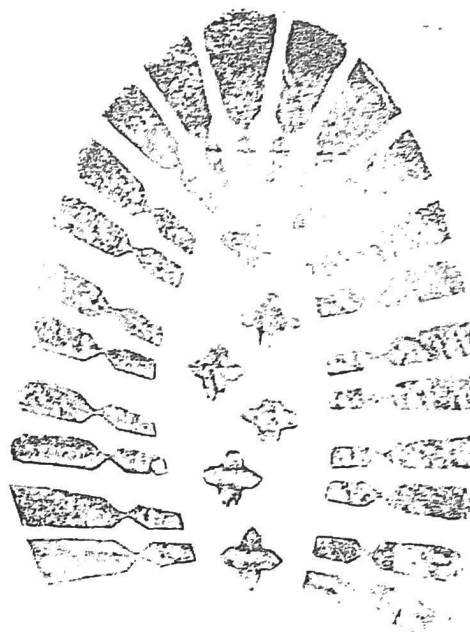
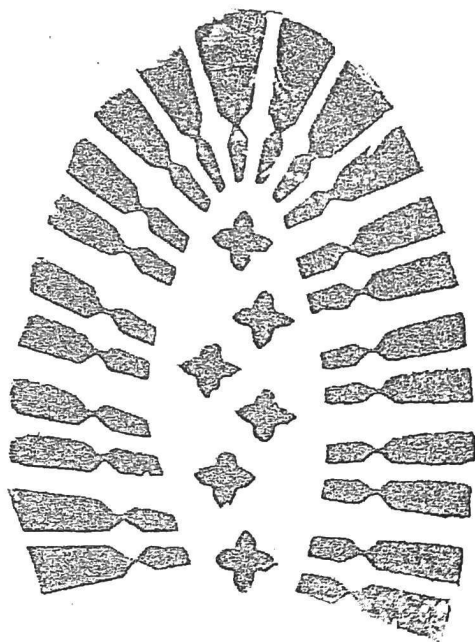


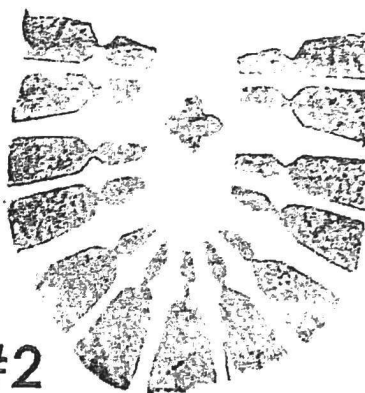
Below are two prints retrieved from a suspected murderer. The prints were made from a shoe recovered from the suspect's house. Forensic analysts are now attempting to match these prints with one of three prints found at the crime scene (A, B, C). These three prints were made by the same model and size of shoe as the one recovered from the suspect's house. You need to find as many individual characteristics as possible to match the suspect shoe with the crime scene prints.

1. Circle and highlight as many small deformities in each print as possible and number them.
2. Compare the deformities of the suspect print with the crime scene prints.
3. Write a claim as to which crime scene(s) the suspect matches. Use evidence to justify your claim and explain your reasoning for shoe print evidence being individualized.

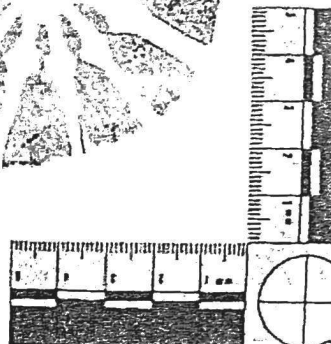
Suspect Prints-These are the same shoe. Different darkness of ink sometimes brings out different features.



#1



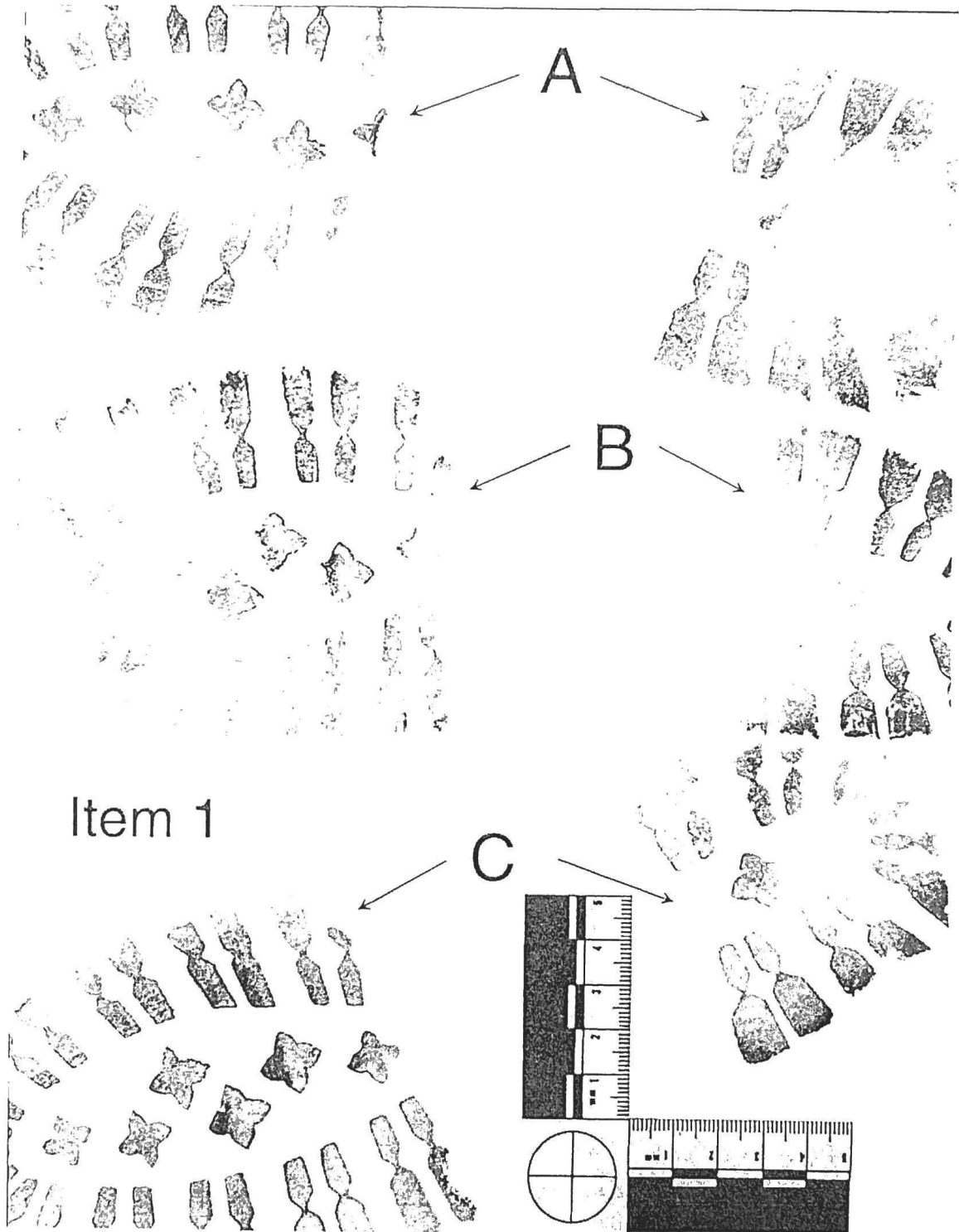
#2



① Claim :

② Evidence :

Crime Scene Prints



③ Reasoning :