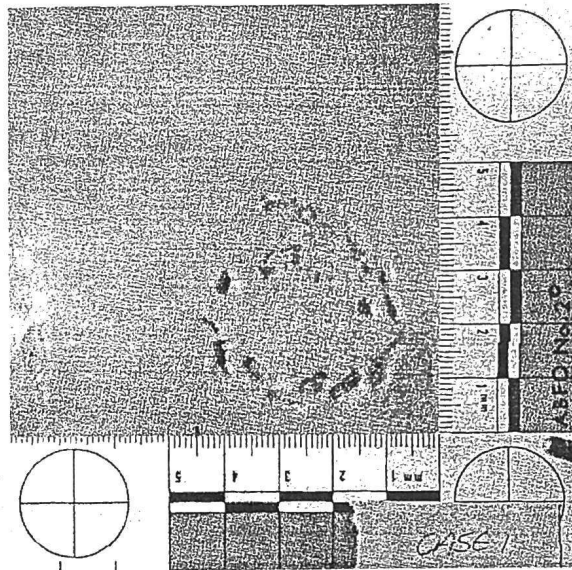


EXERCISE 5

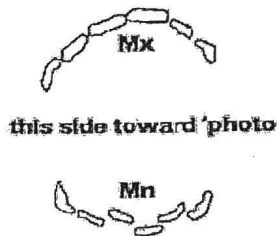
BITE MARK CASES

You are investigating an assault involving bite mark evidence. The bite patterns taken from two suspects, A and B, and bite mark evidence from the victim follow. Compare each suspect's dentition to the wound pattern present on the victim and see if you can make a determination as to either suspect's involvement in the crime. Teachers should consult Chapter 3 of the *Instructor's Manual*.

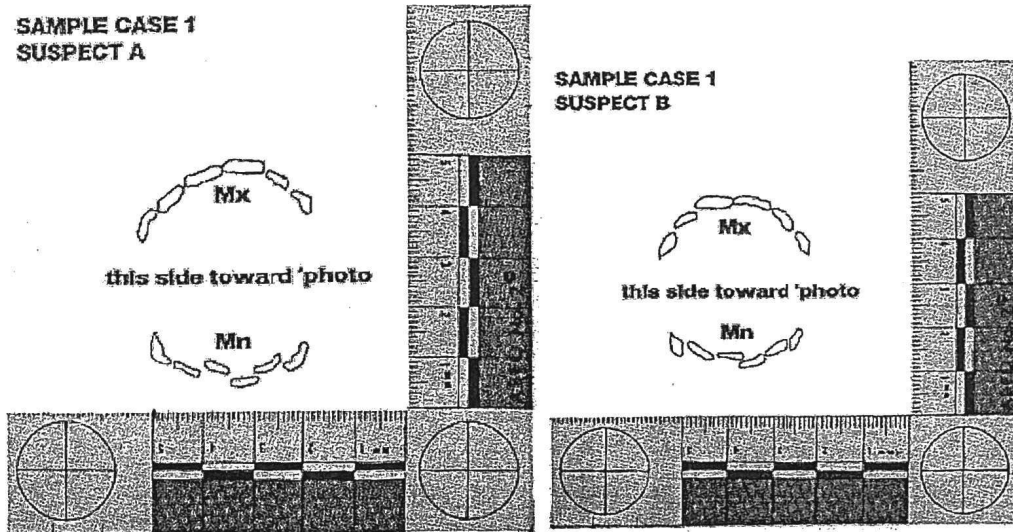
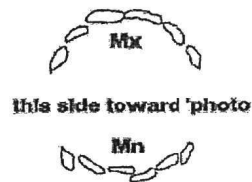
Case 1²³ Bite Mark from Victim



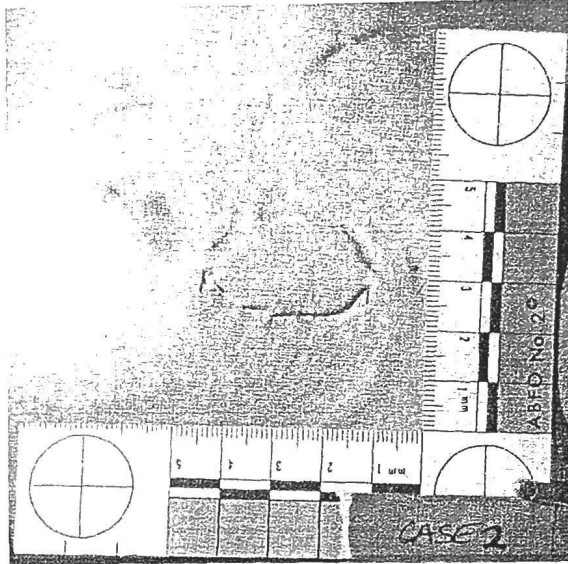
SAMPLE CASE 1
SUSPECT A



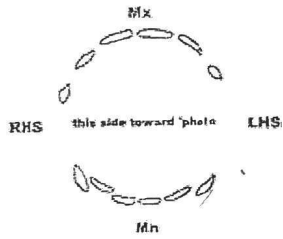
SAMPLE CASE 1
SUSPECT B



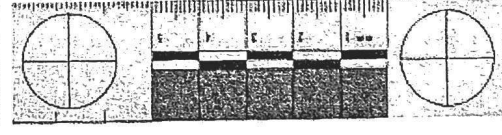
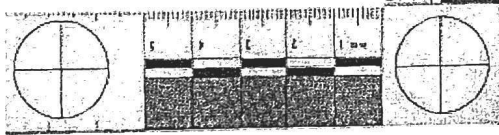
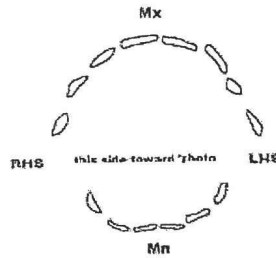
Case 2 Bite Mark from Victim



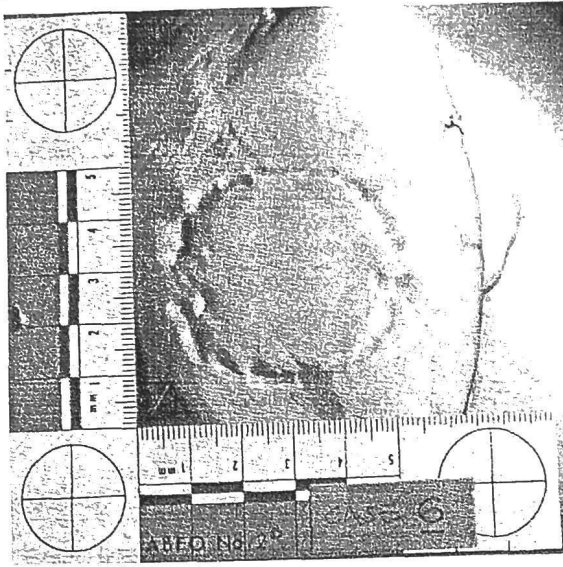
CASE 2
SUSPECT A



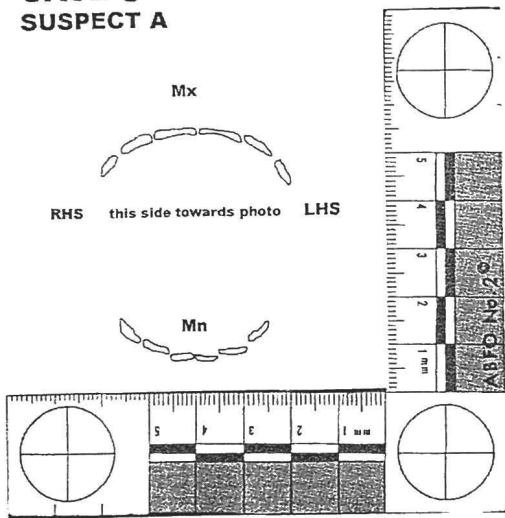
CASE 2
SUSPECT B



Case 3 Bite Mark from Victim



CASE 6
SUSPECT A



CASE 6
SUSPECT B

